

EVIO Labs Medford (pka Kenevir Research)
 540 East Vilas Road, Suite F, Central Point, OR 97502
 541-668-7444 / OLCC 010-1001626980D / www.EVIOLabs.com

What's Up Wholesale Sunblend Peppermint 1000mg



AG-R1049952IHH
 Confident Cannabis ID: 1908KR0143.3617
 Sample ID: M191075-11
 Matrix: Tincture
 METRC Batch #:
 Sampling Method/SOP: SOP.T.20.010
 Date Sampled: 08/26/19 09:00
 Date Accepted: 08/26/19
 Harvest/Process Lot ID: 5:16:11-2.2

Batch ID: 8:14:11-510PE
 Batch Size (g): 3900mL
 Unit for Sale: 1oz
 Harvest/Production Date: 8-16-19

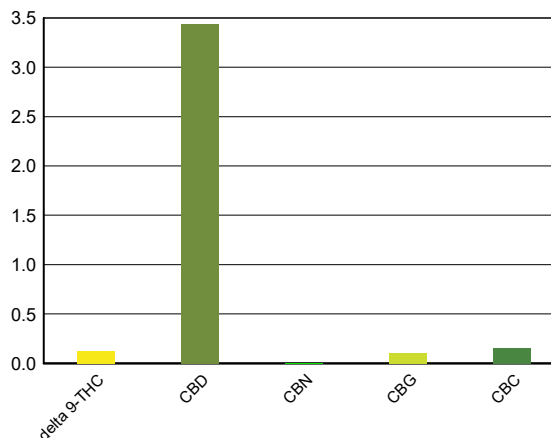
Cannabinoid Analysis

Date/Time Extracted: 08/29/19 12:22
 Date/Time Analyzed: 08/29/19 22:42

Analysis Method/SOP: SOP.T.40.020
 Sample mass: 0.99g/mL

Cannabinoids	LOQ(%)	mg/g	mg/mL	Cannabinoid Profile
Total THC ((THCA*0.877)+Δ9THC)		1.259	1.25	
Total CBD ((CBDA*0.877)+CBD)		34.36	34.0	

THCA	0.0200	< LOQ	< LOQ
delta 9-THC	0.0200	1.259	1.25
delta 8-THC	0.0200	< LOQ	< LOQ
CBDA	0.0200	< LOQ	< LOQ
CBD	0.0200	34.36	34.0
CBN	0.0200	< LOQ	< LOQ
CBG	0.0200	1.051	1.04
CBC	0.0200	1.576	1.56
Sum of tested Cannabinoids	0.0200	38.25	37.9



"Total THC" and "Total CBD" are calculated values and are an Oregon reporting requirement (OAR 333-064-0100). For Cannabinoid analysis, only delta 9-THC, THCA, CBD, CBDA are ORELAP accredited analytes. Cannabinoid values reported for plant matter are dry weight corrected; Oregon Water Activity action level is 0.65Aw and Oregon Moisture Content action level is 15%. Samples above limit will be highlighted RED; FD = Field Duplicate; LOQ = Limit of Quantitation.

Stephanie Moon
 Laboratory Director - 8/30/2019

EVIO Labs Medford (pka Kenevir Research)
 540 East Vilas Road, Suite F, Central Point, OR 97502
 541-668-7444 / OLCC 010-1001626980D / www.EVIOLabs.com

Quality Control

Batch: M19H156 - SOP.T.30.050 Prep for Cannabinoids

Blank(M19H156-BLK1)			Extracted: 08/29/19 12:22		Analyzed: 08/29/19 17:12		
Analyte	Result	LOQ	Recovery Limits	Analyte	Result	LOQ	Recovery Limits
THCA	< LOQ	0.0200 (%)	< LOQ	delta 9-THC	< LOQ	0.0200 (%)	< LOQ
delta 8-THC	< LOQ	0.0200 (%)	< LOQ	CBDA	< LOQ	0.0200 (%)	< LOQ
CBD	< LOQ	0.0200 (%)	< LOQ	CBG	< LOQ	0.0200 (%)	< LOQ
CBN	< LOQ	0.0200 (%)	< LOQ	CBC	< LOQ	0.0200 (%)	< LOQ
Sum of tested Cannabinoid:	< LOQ	0.0200 (%)	< LOQ				

LCS(M19H156-BS1)			Extracted: 08/29/19 12:22		Analyzed: 08/29/19 17:29		
Analyte	% Recovery	LOQ	Recovery Limits	Analyte	% Recovery	LOQ	Recovery Limits
THCA	94.2	(%)	70-130	delta 9-THC	90.2	(%)	70-130
CBDA	99.2	(%)	70-130	CBD	100	(%)	70-130



Stephanie Moon
 Laboratory Director - 8/30/2019